

Nivz Valves & Automation

Jacketed Sight Glass, Sight Flow Indicator

DRG. No.: JKSDWI10H

00

Rev. No.

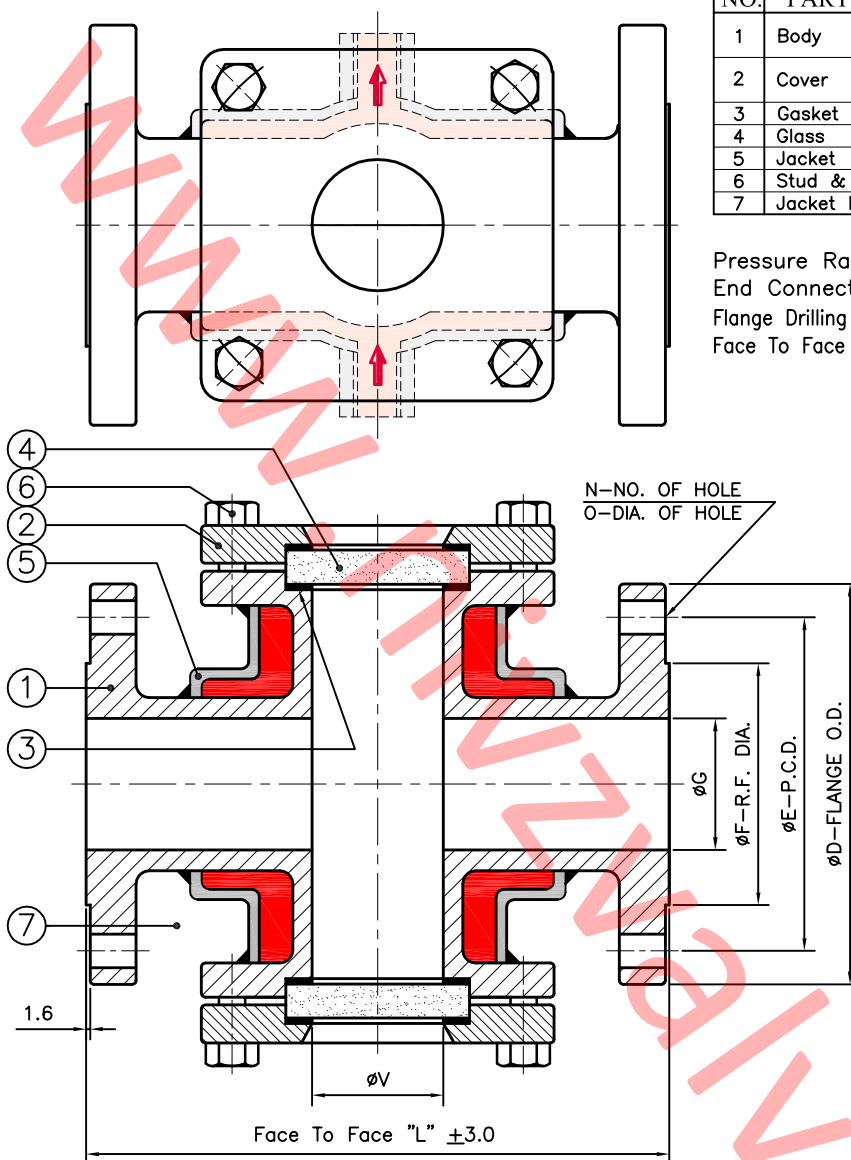
Nomenclature:-

NO.	PART NAME	MATERIAL
1	Body	CS/S.S. 304/316/304L/316L (FABRICATED)
2	Cover	CS/S.S. 304/316/304L/316L
3	Gasket	CAF/P.T.F.E./GFT/GRAPHITE
4	Glass	Toughen Glass
5	Jacket	M.S./S.S. 304/316 (FABRICATED)
6	Stud & Nut	CS/S.S. 304
7	Jacket Nipple	CS/S.S. 304

Pressure Rating : PN 6/PN 10/PN 16
 End Connection : Flanged End, RF
 Flange Drilling : As Per ANSI B 16.5, Class 150
 Face To Face : As Per ANSI B 16.10

Jacket Connection:

Size 1/2" BSP/NPT Female Thread
 Flanged End Connection on Request



Testing Standard : API 598

Test Pressure in PSIG/BAR/KG./CM ²		Hydrostatic							
Pr. Rating	PN 6		PN 10		PN 16				
Body	85	5.9	6	142	9.8	10	228	15.7	16

Design Standard : ASME B 16.34

Dimensions [150 Class]

SIZE	25	40	50	65	80	100
L	127	165	178	190	203	229
ØG	25	38	50	63	75	100
ØV	40	50	65	75	100	125
Drilling Details						
ØD	108.0	127.0	152.4	177.8	190.5	228.6
ØE	79.2	98.5	120.6	139.7	152.4	190.5
ØF	50.8	73.0	92.1	104.7	127.0	157.2
N	4	4	4	4	4	8
ØO	15.8	15.8	19	19	19	19

All Dimensions Are In mm



VALVES & AUTOMATION
www.nivzvalves.com

Client _____

Order / Enq. No. _____

Job / Project _____

Manufactured By : **Nivz Valves & Automation**, Ahmedabad, Gujarat, INDIA.

Do Not Copy Drawing

Due to continuous development programme, the design and data given in this leaflet are subject to change without prior notice

© COPYRIGHT

Appd. _____

Chkd. BBP _____

Drwn. UB _____

For Record

For Reference

For Approval